

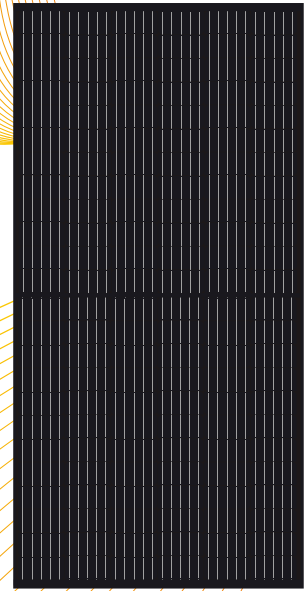
PERC MONO CRYSTALLINE MODULE -----HALF CELLS

DM380M2-72HBB

72 x 6" / 365-380W

Wattages:

365 / 370
375 / 380



Technology

High module conversion efficiency through superior manufacturing technology



Half-Cut Design

Avoid the hot spot effect
Reduce power degradation



Power-Positive Tolerance

Guaranteed power output(0/+3%)



Performance

High performance under low light conditions (Cloudy days, mornings and evenings)



Quality

Manufactured according to International Quality and Environmental Management Systems (ISO9001, ISO14001)



Value

Our vertically integrated business model allows for competitive pricing and great value

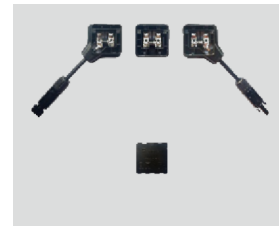
www.dmegcsolar.com

Superior Manufacturing-Quality Assurance



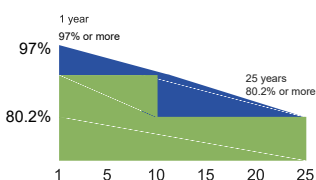
- All modules are manufactured using TQC & SPC quality control systems
- Advanced cell sorting to avoid electric mismatch
- 100% EL Test-before lamination & prior to shipment
- Comprehensive Safety and Reliability tests are performed

Power Output



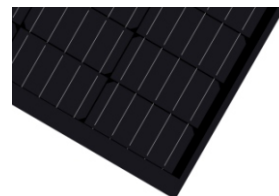
- Our IP68 rated junction box improves module performance and stability
- High-performance connectors provide low resistance interconnection to ensure the full utilization of module output power

Warranty



- 12 Years Manufacturers Warranty
- Linear Power Output Warranty, no less than 80.2% at year 25th

Visible Quality



- Durable, high-quality
- Rigid construction: 5400Pa & 2400Pa rated assembly



Electrical Specifications

* STC irradiance of 1000W/m² spectrum AM 1.5 and cell temperature of 25°C

Module Type	Pm(W)	Tolerance	Imp(A)	Vmp(V)	Isc(A)	Voc (V)	Module Efficiency
DM365M2-72HBB	365	0/+3%	9.15	39.90	9.69	47.56	18.40%
DM370M2-72HBB	370	0/+3%	9.22	40.14	9.75	47.76	18.65%
DM375M2-72HBB	375	0/+3%	9.29	40.38	9.81	47.96	18.90%
DM380M2-72HBB	380	0/+3%	9.36	40.62	9.87	48.15	19.15%

Mechanical Data

Cell Type	DMPD5B157-210(1/2)
Cell Arrangement	144(6x24)
Module Structure	Glass/EVA/Backsheet(black)
Glass Thickness	3.2mm
Application Class	Class A at IEC 61730
Junction Box	Zhonghuan Sunter PV-ZH011-5
Cables	1000mm/4mm ²
Connector Type	PV-ZH202/PV-KST4/PV-KBT4
Fire Rating Class	C

Maximum Ratings

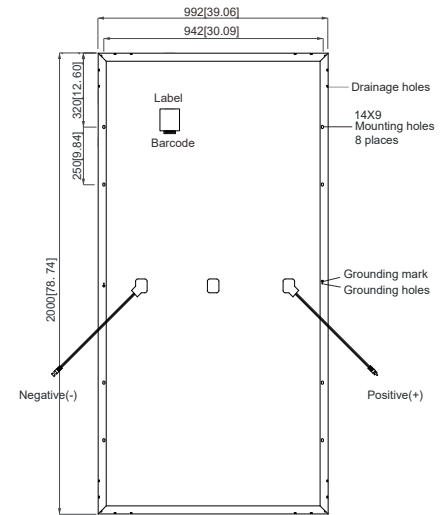
Operating Temperature	-40°C to +85°C
Maximum Load Capacity	Snow 5400Pa / Wind 2400Pa
Maximum System Voltage	1000V DC(IEC)
Maximum Series Fuse Rating	15A
Number of Diodes	3

Packaging

Module Dimensions	2000x992x40mm
Weight	22.7kg
Pallet Dimensions	2050x1130x1130mm
Container	40' HQ
Pieces per Pallet	27
Pallets per Container	22
Pieces per Container	594
Gross Weight per Pallet	650kg
Gross Weight per Container	14,300kg

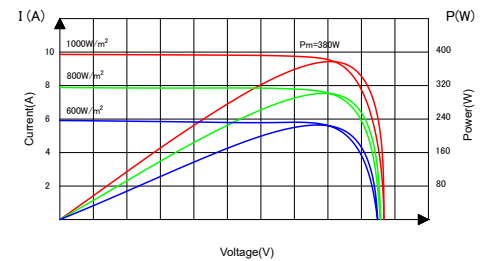
Temperature Characteristics

Nominal Module Operating Temperature (NMOT)	45°C±2°C
Temperature Coefficient of Isc	+0.060%/°C
Temperature Coefficient of Voc	-0.300%/°C
Temperature Coefficient of Pmax	-0.390%/°C

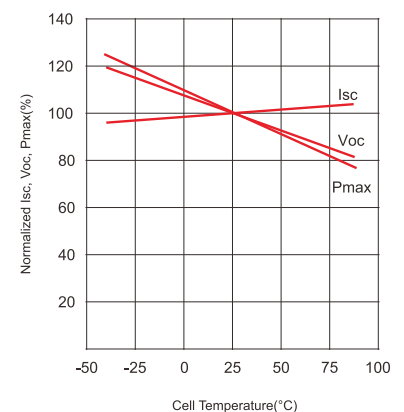


(Back side)
Note:mm[inch]

Current-Voltage&Power-Voltage Curve(380W)



Temperature Dependence of Isc, Voc, Pmax



Hengdian Group DMEGC Magnetics Co., Ltd.
Hengdian Industrial Zone, Dongyang City
Zhejiang Province, China 322118

Tel: 0086-579-8658-8825 Fax: 0086-579-8655-4845
Email: solar@dmegc.com.cn
www.chinadmegc.com www.dmegcsolar.com

MADE IN CHINA